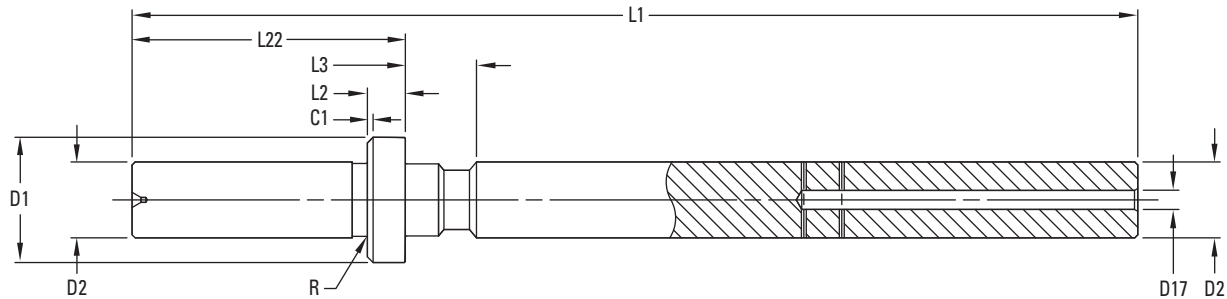


D-M-E Top Last 2-Stage Ejector (TS TL) Component Information

Center Rod – CR

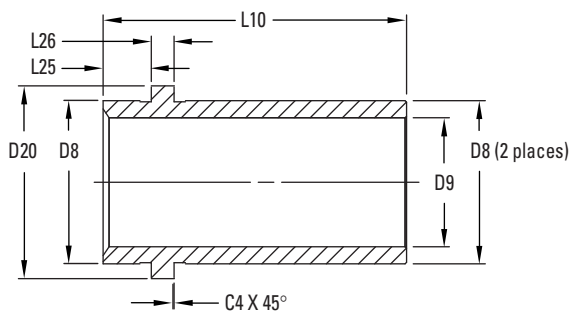


ASSEMBLY ITEM NUMBER	CENTER ROD DIA	COMPONENT ITEM NUMBER	D1 DIA	D2 DIA	D17 DIA	L1* LENGTH	L2 THICK	L3 LENGTH	L22** LENGTH	C1 CHAMFER	R RADIUS	
TS TL 20	20mm (Small)	TS TL 20 CR	33.0	20.0 ^{-0.01}	5.0	265	10.0	18.74	72.0	1.5	.4	mm
			1.30	0.787 ^{-0.0004}	.20	10.43	.39	.738	2.83	.06	.02	in
TS TL 26	26mm (Medium)	TS TL 26 CR	42.0	26.0 ^{-0.01}	6.0	290	12.0	22.93	76.0	2.0	.8	mm
			1.65	1.024 ^{-0.0004}	2.4	11.42	.47	.903	2.99	.08	.03	in
TS TL 32	32mm (Large)	TS TL 32 CR	53.0	32.0 ^{-0.01}	6.0	320	15.0	28.25	82.0	2.5	.8	mm
			2.09	1.260 ^{-0.0004}	.24	12.60	.59	1.112	3.23	.10	.03	in

*Cutoff on both ends of Center Rod only per installation data.

**Final length must have tolerance of -0.02mm (-0.001in) after moldmaker has cut the Center Rod to the desired length.

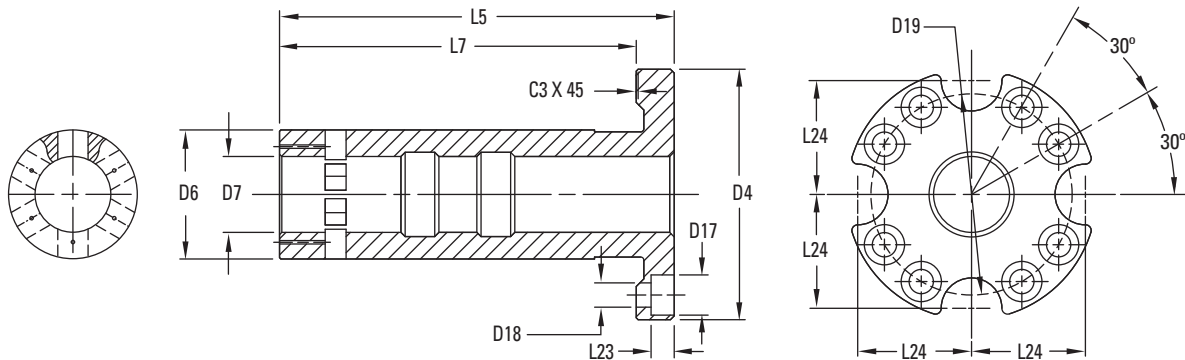
Travel Sleeve – TS



ASSEMBLY ITEM NUMBER	CENTER ROD DIA	COMPONENT ITEM NUMBER	D8 DIA	D9 DIA	D20 DIA	L10 LENGTH	L25 LENGTH	L26 THICK	C4 CHAMFER	
TS TL 20	20mm (Small)	TS TL 20 TS	43.0 ^{-0.03}	34.0	50.8	79.96	12.70	6.00 ^{-0.01}	.5	mm
			1.693 ^{-0.001}	1.34	2.00	3.148	.500	.236 ^{-0.0004}	.02	in
TS TL 26	26mm (Medium)	TS TL 26 TS	54.0 ^{-0.03}	43.0	63.0	85.32	12.70	8.00 ^{-0.01}	.5	mm
			2.126 ^{-0.001}	1.69	2.48	3.359	.500	.315 ^{-0.0004}	.02	in
TS TL 32	32mm (Large)	TS TL 32 TS	68.0 ^{-0.03}	54.0	78.0	93.68	15.88	10.00 ^{-0.01}	.5	mm
			2.677 ^{-0.001}	2.13	3.07	3.688	.625	.394 ^{-0.0004}	.02	in

NOTES: All dimensions shown for components are intended for drawing layout purposes only and in some cases have been rounded off. Also, where the same diameter dimension is shown for parts that fit together, the tolerances create the appropriate clearance or fit.

Body For Cam Fingers – BD (Body only without Cam Fingers)

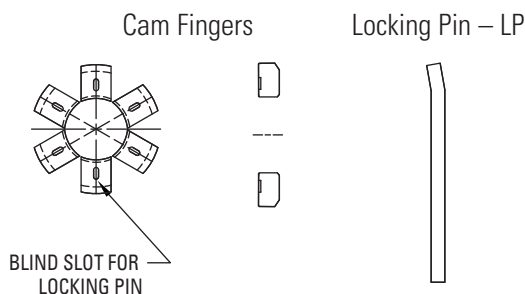


ASSEMBLY ITEM NUMBER	CENTER ROD DIA	COMPONENT ITEM NUMBER	D4 DIA	D6 DIA	D7 DIA	D17 DIA	D18 DIA	D19 DIA	
TS TL 20	20mm (Small)	TS TL 20 BD	66.00 ^{-0.03}	34.0	20.0	10.6	6.4	53.0	mm
			2.598 ^{-0.001}	1.34	.79	.42	.25	2.09	in
TS TL 26	26mm (Medium)	TS TL 26 BD	84.00 ^{-0.03}	43.0	26.0	13.8	8.7	67.0	mm
			3.307 ^{-0.001}	1.69	1.02	.54	.34	2.64	in
TS TL 32	32mm (Large)	TS TL 32 BD	105.00 ^{-0.03}	54.0	32.0	16.8	10.8	85.0	mm
			4.134 ^{-0.001}	2.13	1.26	.66	.43	3.35	in

ASSEMBLY ITEM NUMBER	CENTER ROD DIA	COMPONENT ITEM NUMBER	L5 LENGTH	L7 LENGTH	L23 LENGTH	L24 LENGTH	C3 CHAMFER	
TS TL 20	20mm (Small)	TS TL 20 BD	104.0	94.0	6.1	30.0	.5	mm
			4.09	3.70	.24	1.18	.02	in
TS TL 26	26mm (Medium)	TS TL 26 BD	116.0	103.0	8.2	37.0	.5	mm
			4.57	4.06	.32	1.46	.02	in
TS TL 32	32mm (Large)	TS TL 32 BD	131.0	113.4	10.2	47.0	.6	mm
			5.16	4.46	.40	1.85	.02	in

Cam Finger Replacement Kit – KT

With (6) Cam Fingers, and (8) Locking Pins



ASSEMBLY ITEM NUMBER	CENTER ROD DIA	KIT ITEM NUMBER
TS TL 20	20mm (Small)	TS TL 20 KT
TS TL 26	26mm (Medium)	TS TL 26 KT
TS TL 32	32mm (Large)	TS TL 32 KT

NOTES: All dimensions shown for components are intended for drawing layout purposes only and in some cases have been rounded off.
Also, where the same diameter dimension is shown for parts that fit together, the tolerances create the appropriate clearance or fit.